

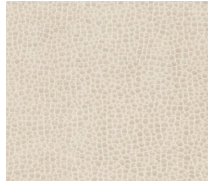
Architex® | Krug

DIGITAL PRODUCT LISTING

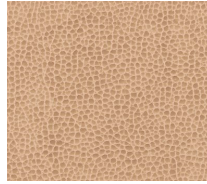
For more colors and complete product information visit architex-ljh.com

Pattern	Width	Repeat	Content / Finish	Performance	Cleaning
Bermuda	54"	None	100% Polyurethane (Polycarbonate)	100,000+ Hydrolysis 7+ Weeks	WS
Enthusiast	54"	None	100% Polyurethane (Polycarbonate)	100,000+ Hydrolysis 7+ Weeks	WS
Rugged	54"	None	100% Polyurethane (Polycarbonate)	100,000+ Hydrolysis 7+ Weeks	WS
Ryder	54"	None	100% Polyurethane (Polycarbonate)	300,000+ Hydrolysis 10+ Weeks	WS
Ultrachevron	54"	None	52% Acrylic, 26% Polyamide, 15% Polyester, 7% Cotton	250,000+ Inherently Ink and Stain Resistant	W
Ultraflannel	54"	None	37% Acrylic, 26% Polyamide, 23% Polyester, 14% Cotton	250,000+ Inherently Ink and Stain Resistant	W
Ultraposh	54"	None	54% Acrylic, 25% Polyamide, 14% Polyester, 7% Cotton	250,000+ Inherently Ink and Stain Resistant	W

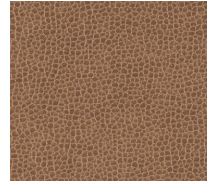
EVOLUTIONARY
SERIES



Rugged Stone



Rugged Dune



Rugged Earthbound



Bermuda Castle Harbour



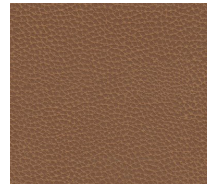
Bermuda Surfside Beach



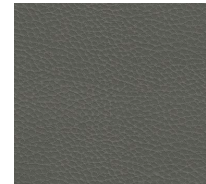
Bermuda Sugar Cane



Bermuda Horseshoe Bay



Enthusiast Cigar

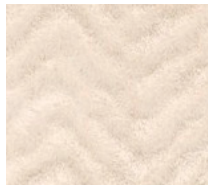


Enthusiast Biking

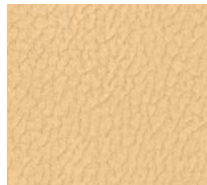


Enthusiast Boating

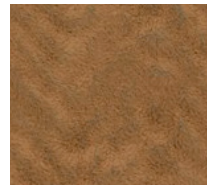
ULTRA SERIES™



Ultrachevron Creme



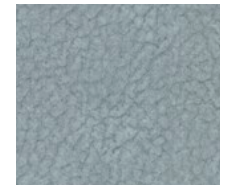
Ultraposh Desert



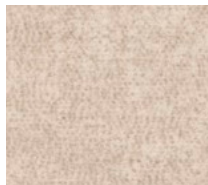
Ultrachevron Acorn



Ultrachevron Boulder



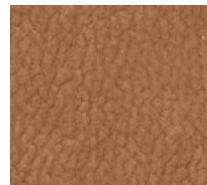
Ultraposh Polaris



Ultraflannel Sesame



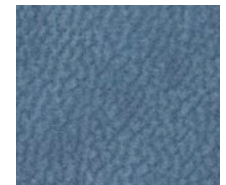
Ultraflannel Hazelnut



Ultraposh Maple

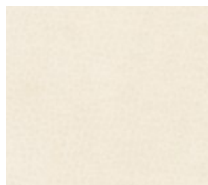


Ultraflannel Pewter

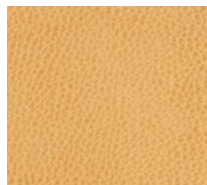


Ultraposh Marine

RYDER



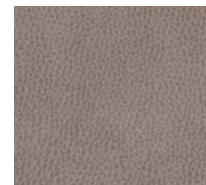
Snow



Foal



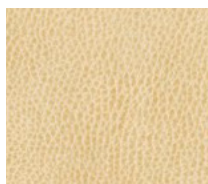
Bristol



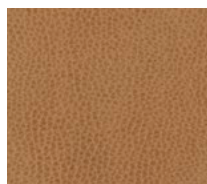
Windy



Gulfstream



Moccasin



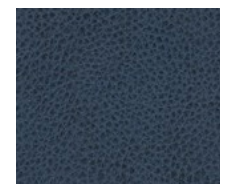
Wheat



Derby



Chimney



Thistledown